

LAKEMETROPARKS



Lake Metroparks Lakefront Trail - Phase II

ODOT PID 117487

Virtual Open House

Project Description

- 10-foot-wide ADA-accessible asphalt path
- Multi-use (pedestrian, bicycle, etc.)
- Phase I trail will be completed in early 2024 and span 2,300 feet of shoreline west of Painesville Township Park
- Phase II will extend the trail an additional 900 feet
- Revetment construction and slope stabilization work will be completed under a separate project to reduce erosion and ensure a stable base for the Phase II trail

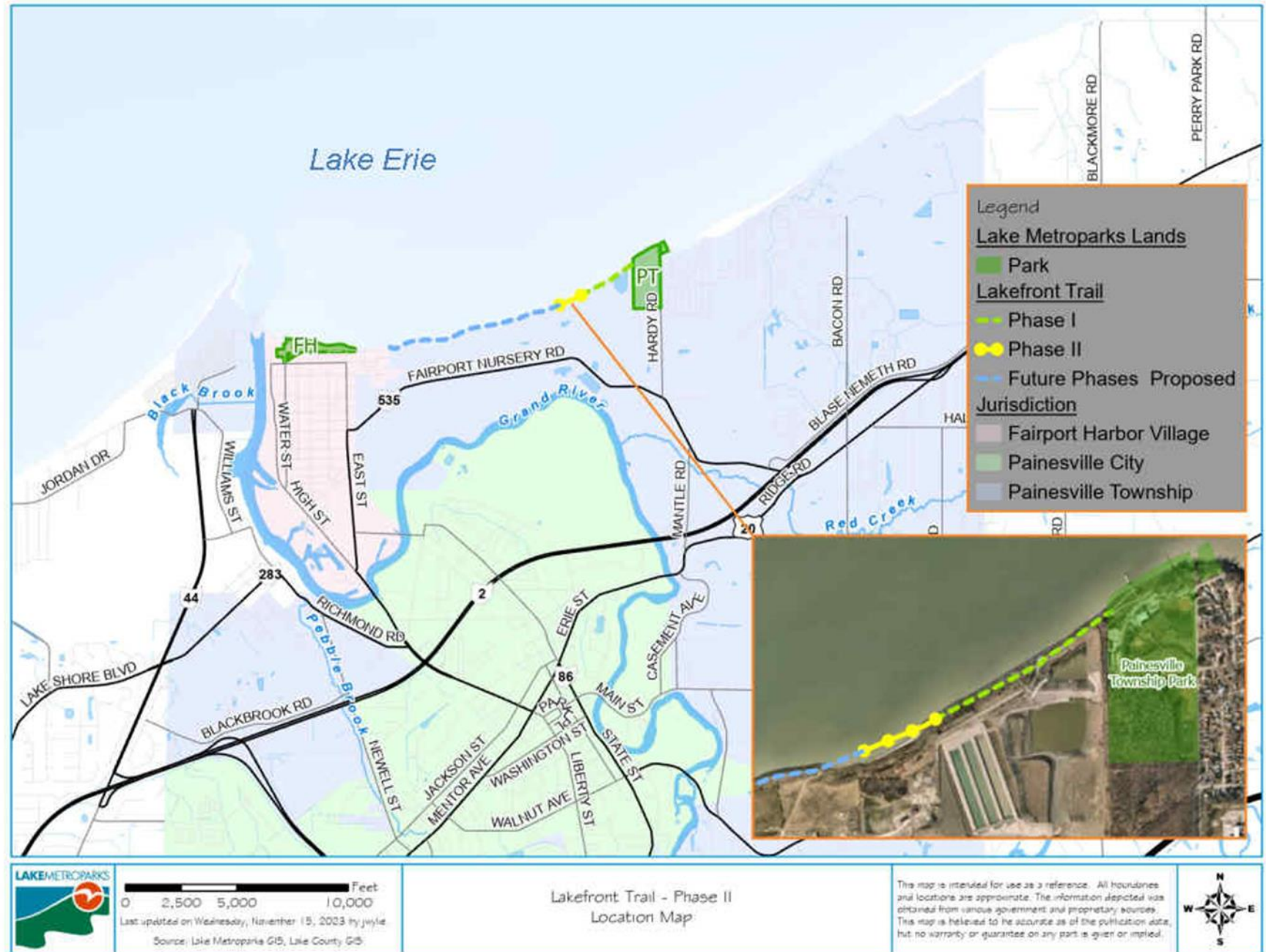
Schedule and Funding

- Shoreline revetment construction planned for 2024
- Phase II trail engineering in progress
- Phase II trail construction anticipated to begin spring 2025
- Preliminary estimated cost of \$1,871,000
- Funds administered by ODOT



Preliminary Plans

- Trail to be constructed on a bench created during the construction of a shoreline revetment structure and slope stabilization work
- Will connect to the recently completed Phase I segment of trail and end at the proposed start point for Phase III.





Environmental Impacts

- Minimal environmental impacts anticipated
- Project area will be recently disturbed due to revetement construction and slope stabilization work completed prior to Phase II.
- Site has been impacted by industrial activity in the past

Section 4(f)

Protects recreational properties and historic sites

- Publicly-owned parks and recreation areas
- Publicly-owned wildlife and waterfowl refuges
- Public and privately-owned historic sites
- This project will not include work on parks, refuges, or historic sites

Federal-Aid Highway Act of 1968 amended Department of Transportation Act of 1966 to include 4(f) language:

The Secretary shall not approve any project which requires the “use” of land from a public park, recreation area, wildlife and waterfowl refuge, or historic site, unless:

- (1) There is no feasible and prudent alternative to the use of such land, and;
- (2) Such program includes all possible planning to minimize harm

Potential Benefits

- Improved access to a section of the Lake Erie shoreline that had previously been closed to the public
- Increased recreational opportunities
- Scenic views of historic Fairport Harbor Lighthouse and the Painesville Township Park pier
- ADA-accessible route for visitors to take in the sights of Lake Erie



Submit Comments by February 15, 2024

- Comments will be reviewed by Lake Metroparks
- Responses can be seen on the Lake Metroparks' website 14 days after the comment period closes

LAKEMETROPARKS



- Email
vurbanski@lakemetroparks.com
- Mail
Lake Metroparks
Attn: Vince Urbanski
11211 Spear Road
Concord Twp., OH 44077
- Phone
(440) 639-7275 ext. 1602