

FARMPARK PAVING IMPROVEMENTS

PROJECT NUMBER 2025-007

LAKE METROPARKS FARMPARK

8800 EUCLID CHARDON ROAD
KIRTLAND, OH 44094

JANUARY 15, 2025

SHEET INDEX

TITLE SHEET	1
SITE PLAN	2



LOCATION MAP

OWNER
LAKE METROPARKS (LMP)
11211 SPEAR ROAD, CONCORD TOWNSHIP, OHIO 44077
PH: 440.639.7275 FAX: 440.639.9126

OFFICIALS
LAKE COUNTY PROBATE JUDGE:
MARK J. BARTOLOTTA
LAKE METROPARKS BOARD OF PARK COMMISSIONERS:
GRETCHEN SKOK DISANTO
JOHN C. REDMOND
FRANK J. POLIVKA
EXECUTIVE DIRECTOR:
PAUL PALAGYI

OWNER REPRESENTATIVE
SETH OLDHAM
PARK PLANNER
PH: 440.639.7275 FAX: 440.639.9126
SOLDHAM@LAKEMETROPARKS.COM
WWW.LAKEMETROPARKS.COM

PROJECT DESCRIPTION:
THIS PROJECT IS LOCATED AT LAKE METROPARKS FARMPARK PROPERTY IN THE CITY OF KIRTLAND, LAKE COUNTY, OHIO. THIS PROJECT CONSISTS OF SINGLE LAYER CHIP SEALING, INSTALLATION OF ASPHALT PAVEMENT COURSES, BERMING, SEEDING & MULCHING, AND OTHER MISCELLANEOUS RELATED ITEMS OF WORK. THE CONTRACTOR IS RESPONSIBLE FOR BEING FAMILIARIZED WITH EXISTING SITE CONDITIONS AND FOR VERIFYING ALL FIELD MEASUREMENTS.

UNDERGROUND UTILITIES
CONTACT BOTH SERVICES
CALL TWO WORKING DAYS
BEFORE YOU DIG

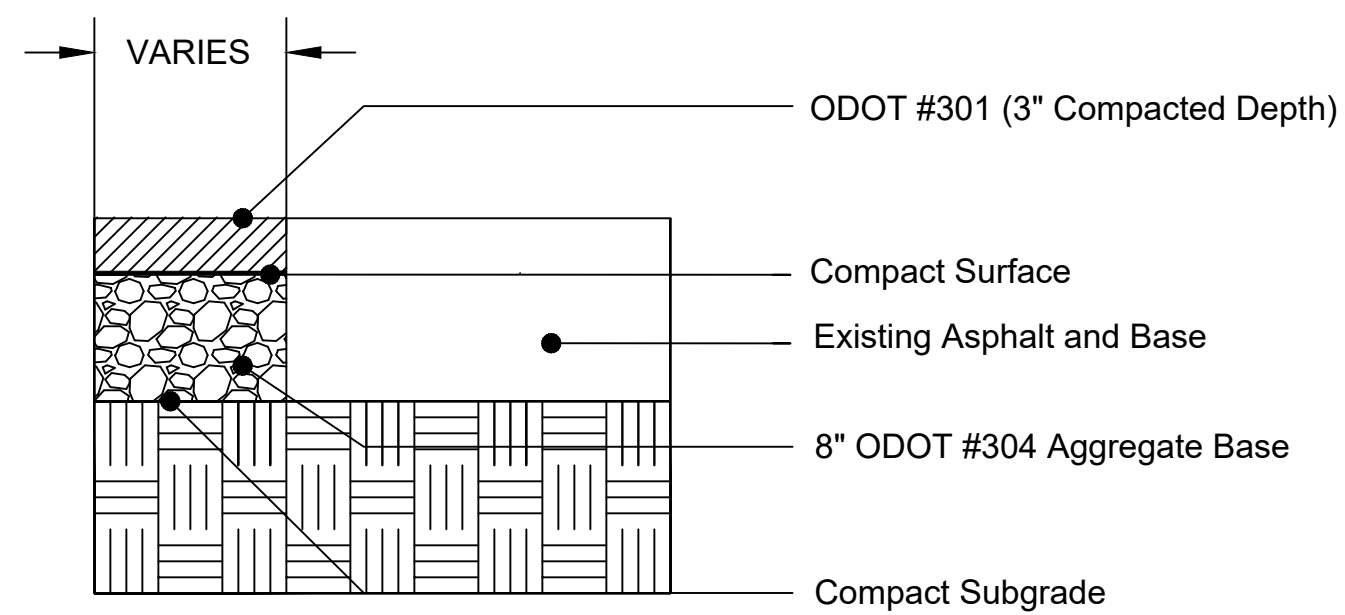
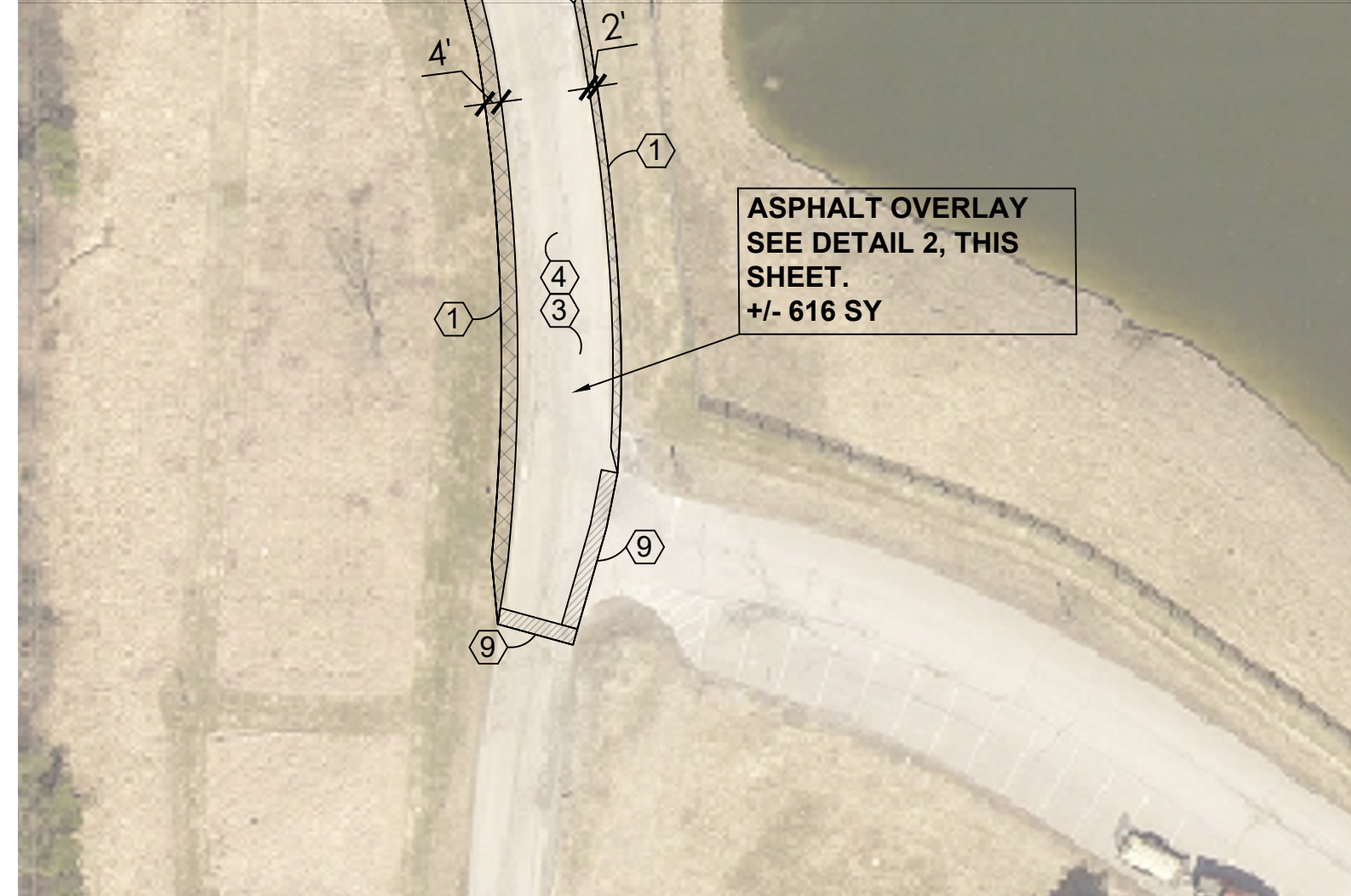
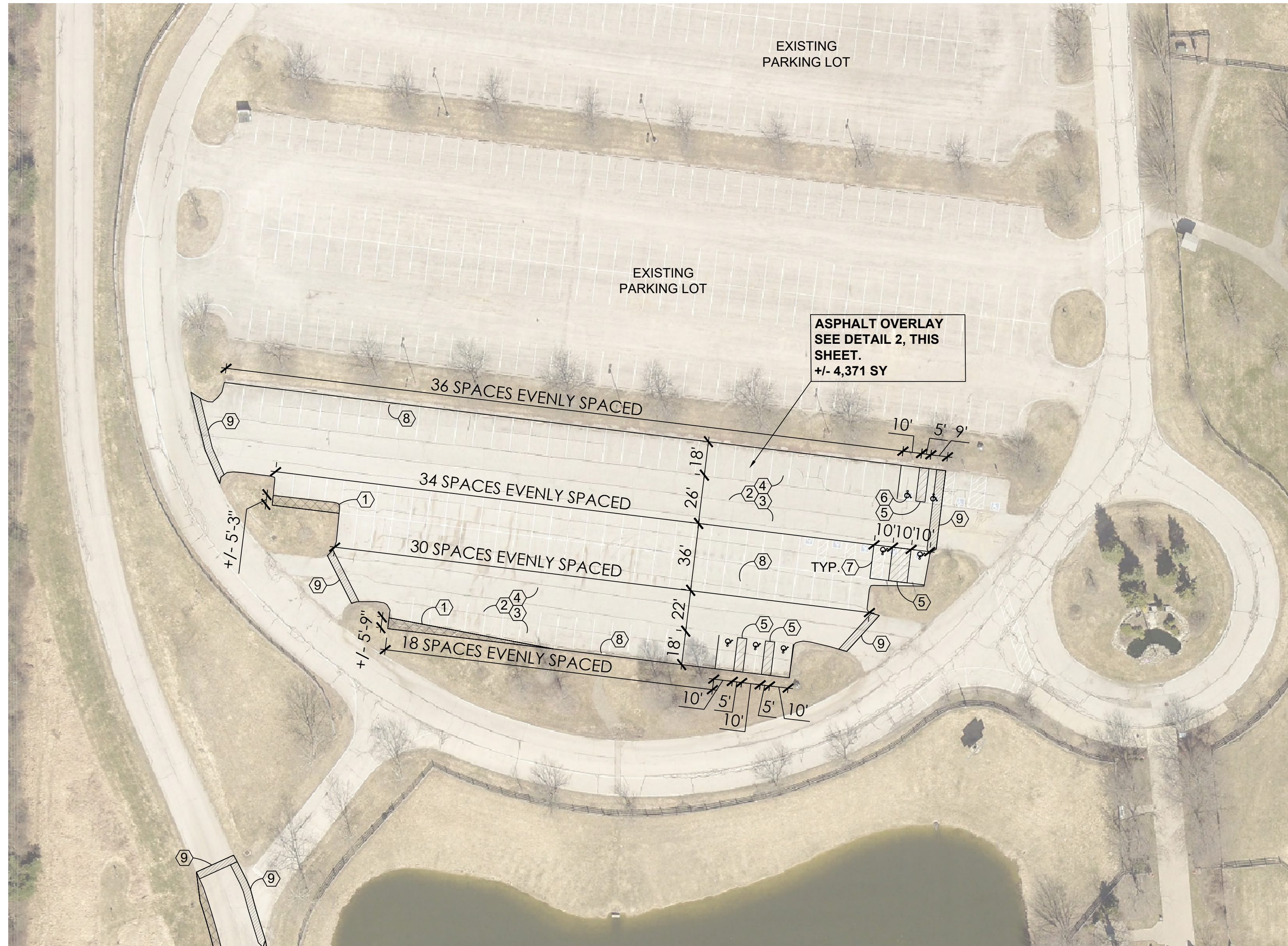
CALL
1-800-362-2764
(TOLL FREE)
OHIO UTILITIES PROTECTION SERVICE
NON-MEMBERS
MUST BE CALLED DIRECTLY

OIL & GAS PRODUCERS PROTECTIVE
SERVICE CALL: **1-800-925-0988**

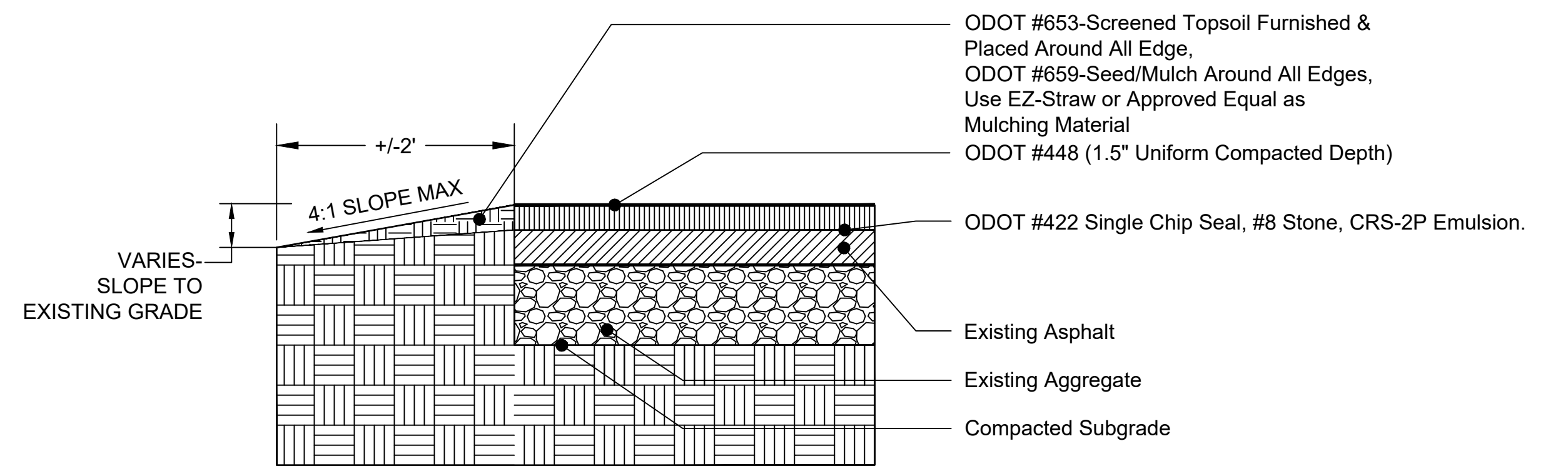
DRAWN BY: LMP-SJO	NO.	REVISIONS	DATE	BY	DRAWING NUMBER
SCALE:					1/2

TITLE
FARMPARK PAVING IMPROVEMENTS
TITLE SHEET

NORTH



1 ASPHALT PAVEMENT WIDENING
N.T.S.



2 ASPHALT OVERLAY
N.T.S.

Notes:

1. Contractor shall field verify all dimensions/quantities.
2. Each contractor shall notify the Owner's Representative (Project Manager) immediately if a discrepancy is found between the dimension given and actual dimensions in the field, prior to construction.
3. Contractor shall provide temporary barriers at limits of construction to assure public safety during construction as necessary.
4. Contractor is to coordinate access and staging areas with Lake Metroparks.
5. Contractor must repair (topsoil and grade) all disturbed areas.
6. Any damage to surrounding areas is the Contractors responsibility to repair.
7. All site work shall conform to ODOT Construction and Material Specifications - current version.
8. Excess spoils, stone, and all debris are to be removed from the site and is the Contractors responsibility.
9. ODOT Item 423 Crack Sealant is to be applied at the joints/convergence of all existing pavement and new pavement.
10. All joints between proposed/existing asphalt, concrete, sidewalks etc to meet flush.

CONSTRUCTION NOTES

- ① PROPOSED ASPHALT PAVEMENT WIDENING. SEE DETAIL 1 ON DRAWING 2 OF 2. LOCATIONS MARKED BY LAKE METROPARKS PROJECT MANAGER. (APPROXIMATELY 155 SY)
- ② PROPOSED ASPHALT PAVING SCRATCH COURSE, APPLY TACK COAT BEFORE INSTALLATION. (+/- 40 CY)
- ③ ODOT ITEM 422 CHIP SEAL, SINGLE CHIP SEAL, #8 STONE, CRS-2P EMULSION. (APPROXIMATELY 4,987 SY)
- ④ PROPOSED ASPHALT PAVEMENT OVERLAY. SEE DETAIL 2 ON DRAWING 2 OF 2. SLOPE TO DRAIN. (APPROXIMATELY 4,987 SY)
- ⑤ ITEM 642 4" TRANSVERSE/DIAGONAL LINE, WHITE PAINT.
- ⑥ ITEM 642 (7) HANDICAP SYMBOL MARKING, WHITE PAINT, NO BLUE BACKGROUND.
- ⑦ ITEM 642 PARKING STALL MARKING, WHITE PAINT.
- ⑧ REMOVE AND RESET EXISTING (60) WHEEL STOPS
- ⑨ BUTT JOINT, TYP., WHERE OVERLAY MEETS EXISTING PAVEMENT.

OVERALL PAVING PLAN

SCALE: 1" = 40'

DRAWING NUMBER	2/2
BY	
DATE	
REVISIONS	
NO.	
DRAWN BY: LMP-SJO	
SCALE:	
TITLE FARMPARK PAVING IMPROVEMENTS SITE PLAN	
NORTH	
LAKEIPARKS	